



THE *Cresset*

December 2019

News, views and what's on, in and around Bottisham

Advent Village Praise

Sunday 8th December
5.30-6.30pm, Lode Chapel.



Familiar hymns, readings, and stories of how faith and life connect, followed by tea, coffee and cakes.

For more details contact:

Rev. Alan Brand C.812558

alan.brand@renewchurch.org.uk

or **Rev. Sue Giles**

suethovic@btinternet.com

If transport is required call: 07553
151585

Join together with believers from our villages (Bottisham, Lode, The Swaffhams, Quy, The Wilbrahams). You may worship elsewhere on a Sunday morning, why not join us for **Village Praise - no strings attached.**

Maybe you don't attend worship regularly but would watch Songs of Praise ...
try Village Praise.

We look forward to seeing you.

MISTLETOE AND WHINE



It's that time of year again when we approach Christmas and the festive season with the usual anticipation and excitement.

As we head towards the end of the year, we also reflect on what we've done over the last 12 months and what the world has done to us.

It is hard to think beyond the chaos and uncertainty that the current B***** question has put us in, but there has in fact been a lot of other things going on and some of much greater import. All but the hardest deniers recognise the need for us to look much closer at the way the world uses its resources. Which will affect us and future generations more and more as time goes on.

Closer to home I would like to take the opportunity to thank everybody who works away in the background to produce and distribute our village magazine. Do you know there are near to 50 people directly involved in getting this monthly magazine to your doormat? From the committee to the distribution rota team. From the 30+ delivery team to the composers and printers. There are also those stalwart contributors who regularly produce the articles which we get without fail every month.

I would collectively like to thank everyone for their help without whom we would not get the job done. Thank you, each and every one.

Village news now. You will probably be aware via the grapevine that we are about to lose our Italian restaurant which has been enjoyed by many for several years. After the owners were unable to sell it as a going concern, they have gained planning permission for a change of use to residential. The restaurant will close on the 21st December, so if you want to pay a last visit, you will need to be quick. We wish them well for the future.

From a personal point we will miss the opportunity to just walk across the road for a nice meal without having to get in the car to drive somewhere. There are other options of course, from Indian to Chinese and kebabs to the Pub.

This year as every year there was the Armistice Day service on the Sunday nearest the 11th of November and this year we were in Qu with a great turnout of Legion members, Army cadets, Scouts, Brownies, and Beavers etc. Again, as so often happens, we were blessed with a fine sunny day to enjoy the parade into Church.

There is also every year a small service in Bottisham on the 11th at 11 o'clock at the village sign where there is a small garden of remembrance laid out. However, this year was slightly marred by the council bin team who turned up just as the last post was starting the two minutes silence. Leaving their engine running, they got out right beside the 30 odd silent crowd, emptied the street bin at the bus stop, mounted up and as the bugler started to play reveille to end the silence they drove off up the high street. I hope the message that I gave to the customer service girl in Ely gets back unedited to the head of waste collection.

(continued on page 2.)

(continued from page 1.)

Do enjoy the run up to Christmas (it is often the best bit) and have a very merry Christmas. If you know of somebody who will be on their own, do make contact and wish them well, or if you can, include them in one of your own activities.

One important thing to note, is that as the printers shut down for Christmas and New Year, we need to get the January magazine printed beforehand, so please note the copy deadline is early at 10th December at the latest. If you have something to put in send soonest rather than waiting until the 10th. It all helps.

Finally, I will save talking about New Year until the next issue as it is bad luck to do the HNY thing until after the bells.

A very merry Christmas to you all - Peter Walker

Bottisham WI

Trevor Chapman from Anglia Ear spoke most amusingly about Better Health through Better Hearing at our October meeting. He has had a long career in audiology both in working in management and developing hearing aids and in inserting cochlear implants. He is at present pursuing another degree course and a doctorate to further his knowledge.

He explained the hearing process with slides and explained that hearing loss causes disorientation and affects balance so that people are more likely to fall which all cause further problems for the NHS. Age related hearing loss has been proved to be a further problem in the onset of dementia. We must take having a hearing test more seriously – we have annual eye tests without shame. He told us that 1 in 6 people from the age of 50 suffer hearing loss with an enormous social and economic impact and by 2031 the ratio will be 1 in 5. Hearing loss with associated problems for the NHS will become the 3rd most expensive cost to the NHS following diabetes and cataracts then. If you listen to your MP3 player more than an hour a day at 60% volume you are likely to have double the chance of suffering hearing loss.

BOOK A HEARING TEST TODAY YOU KNOW ITS WORTH IT.

Arrangements for our **Annual Christmas Dinner at Newmarket Golf Club on Tuesday 17th December** were made.

Our final meeting of the year is our **Christmas Party on Tuesday 10th December.**

We meet at Queens Court at 7.30 pm and visitors and new members are most welcome.

Sylvia Overton



Copy deadline for next issue is 10th December.

Please send material to the editor at BottishamCresset@gmail.com

Contents

Services in the Anglesey Benefice in December	4	Bottisham Community Sports and Social Club	19
RENEW Church	4-5	News from Bottisham Medical Practice Patients' Group	21
1st Bottisham Scouts Autumn Update	7	Anglesey Group Mothers' Union Report	23
Bottisham Village College	9	Sales, Wants and Swaps	23
Bottisham Adult Learning Association (BALA)	9	East Anglian Air Ambulance	27
District Councillors Report	11	RedGreen News	29
Parish Notes	11 & 13	Cambridgeshire Fire & Rescue Service	31
Planning Notes	15	Public Transport Matters ..	35 & 37
Bottisham and District Gardening Club	17	Thoughts of a Sports Nut	47 & 49
		Jolley Old World	53 & 55

Bottisham Library

We have another volunteer who has joined us recently, Diana Bettony and welcome too to Ben who started after half term as the new School Librarian.

The Lego Club next meets on Saturday 7th December with the subject of Christmas starting at 10.30 in the Library.

Please note that the Library will be closed for the Christmas period from the end of session on Thursday 19th December and re-open on Tuesday 7th January for the afternoon session.

Cressida Cowell as the newly appointed Children's Laureate recently stated that "Books and Reading are Magic. For early readers a book is a telescope, a potion, a rope ladder to escape a lonely tower, a pair of seven league boots. What could be more valuable?" She also says that we need not finish a book as a duty like off-putting greens, we can always pick it up again later. We have a great selection of books for the under 5's and up to 12 books may be borrowed at any one time.

Sylvia Overton

Services in the Anglesey Benefice in December

Sunday 1st	8am	Holy Communion (BCP) , Swaffham Bulbeck
	9.30am	Village Worship , Quy Village Hall Christingle , Swaffham Bulbeck
	11am	Holy Communion , Bottisham
	3pm	All Souls' Service, Lode
Wednesday 4th	8pm	"C by C" (Short candlelit meditative service), Bottisham
Sunday 8th	9.30am	Village Communion , Swaffham Bulbeck
	11am	Family Communion , Lode
Saturday 14th	4pm	Carol Service , Lode
Sunday 15th	8am	Holy Communion (BCP) , Bottisham
	9.30am	Holy Communion , Quy
	4.30pm	Carol Service , Swaffham Prior
Friday 20th	10am	Play & Praise Crib Service for toddlers , Lode
Sunday 22nd	9.30am	Children's Church , Lode
	11am	Holy Communion , Swaffham Prior
	3pm	Carol Service , Quy
	6.30pm	Carol Service , Bottisham
		Carol Service , Swaffham Bulbeck
Tuesday 24th	3pm	Crib Service , Swaffham Prior
	4.30pm	Crib Service , Bottisham
		Crib Service , Swaffham Bulbeck
	6pm	Holy Communion , Lode
	11.30pm	Midnight Mass , Bottisham
		Midnight Mass , Swaffham Bulbeck
Wednesday 25th	8am	Holy Communion (BCP) , Quy
	10am	Holy Communion , Swaffham Prior
Sunday 29th	10am	Holy Communion , Quy

You are very welcome to attend any of these services.



RENEW Church

Live The Questions

One of my heartfelt convictions is that everyone should learn to, and then be free to, question everything boldly in order that we may understand more deeply. I have learned more about who God is; who I am; what the Church is; and what our purpose is in the world - by asking question after question and engaging in dialogue with others. Too many people in church don't question what they are taught/told, and as a result have a shallower, surface understanding and feel very uncomfortable/vulnerable when their belief is challenged.

At **RENEW church**, questions are more than welcome. I frequently have people coming to me after a sermon to ask a question - to continue the conversation. It is in this practise of ongoing dialogue that I believe we grow in the faith and discover truth.

In my daily times of reading and reflection I am focussing this month on some questions it's worth asking in life, questions like this one:

When is the last time you were amazed (in a good way), in a 'WOW!' type way? This is a question I asked my church family in a recent sermon. It is my belief, and understanding from my reading of the Gospels, that the people who followed Jesus, regularly found themselves saying, 'Wow!' I would genuinely be interested to hear your responses. I don't think it's possible to follow Jesus and not find ourselves saying, 'Wow!' regularly. I want to be someone who steps out in faith, takes risks, serves others, extends hospitality, journeys with people through the highs and lows of life - that we might be wowed together by the goodness in our lives.

you are welcome to join us at RENEW Church as we explore week by week more of what it looks like to live the questions of life - Come as you are, come and see, come with your questions.

Merry Christmas! - Rev'd Alan Brand

Christmas Day Dinner at Lode Chapel

The Brand family will be having their dinner on Christmas Day at Lode Chapel. We are doing this in order to have space around the table to invite others to join us. A number of people have indicated they would like to do this and we would like you to know that you are welcome if this is something you would like to do.

If you would like to join us please let us know, lifts can be arranged. Please call Alan on 01223 812558/07896000796 or email alanbrand77@icloud.com

We will have a prawn cocktail starter, choice of meat with all the trimmings, a vegetarian option, Christmas pudding or steamed sponge pudding for dessert.

We will be at the chapel between 2pm and 6pm and will aim to be ready to eat between 2pm and 2.30pm.

There is no charge. We would be honoured to have your company. If you are going to be alone, or struggling in other ways at Christmas time you are especially welcome, but you don't have to be struggling, you may just fancy a change. You are welcome.

RENEW Services for December 2019

Sunday Morning worship is held at Bottisham Primary School

The services begin at 10.30 am

Croissants and drinks are available from 10.10 am.

Except for our special Christmas Guest Service on Sunday 22nd December which will be at 4.00pm

Everyone is welcome to all our services

We have activity groups for children and young people

Also please note the Advent Village Praise 'Carols by Candlelight' on December 8th at Lode Chapel from 5.30-6.30pm. Please come and join us!

For more information about any of the activities of RENEW Church please contact:
Rev. Alan Brand on C.812558. Email: alan.brand@renewchurch.org.uk
Or visit our website at www.renewchurch.org.uk



An accountancy service
based in Burwell that
covers everything
your business needs

For more details contact Paul on

 info@cb25accounting.co.uk

 07803 782423  [cb25accounting](https://www.facebook.com/cb25accounting)



Sales, servicing, repairs and sharpening
of all types of garden machinery.

Collection and delivery available.

Friendly, local and professional service.



C.W.KIRK LAWMOWERS

01638 744 349

CWKIRKLAWNMOWERS.CO.UK

44 NEWMARKET ROAD BURWELL CAMBRIDGESHIRE CB25 0AE



SAME DAY SECURITY SERVICES

OUR SERVICES

- Locksmiths
- Wireless Alarm Installation
- No Call out charges
- Key Cutting available
- Available 24/7
- Free estimates

Call **Peter Martin** **07989 954682** | **01223 967407**

Email : peter.martin@lockswift.co.uk
Web : www.lockswift.co.uk/locksmithsincambridge



The advertisement for LockSwift features a portrait of Peter Martin, a representative, on the left. The central text highlights 'SAME DAY SECURITY SERVICES'. Below this, a list of services is provided, including locksmiths, alarm installation, and key cutting. Contact information for Peter Martin is prominently displayed. On the right, a white LockSwift van with red and black branding is shown.

Scouting remains strong at 1st Bottisham, our numbers are now at 23 and are forecast to remain stable for the next few months at least.

As the Scouting adventure continues, we have been doing the following activities this term.

The Hobbies badge, Blind cooking, the 1st Aid badge (stage 3), our annual Conkers competition (see below) and an old favourite, spotlight. 13 of our scouts (more than half of the troop) have just attended the Remembrance parade at Quy Church. We are looking forward to wide games, a sausage sizzle and an all night stay awake. All before Christmas!

One of my favourite activities is always the annual “Conker Championship”. This term was no different to the last few years as some of our Scouts have never played the game before.

So, one week before our competition, I went to the college to collect some conkers from the 2 trees at the edge of the new car park. It was like walking over a carpet of conkers. It would seem that the ipads (or whatever they are called) are winning the battle, and conkers are what “us older people” used to play with. Within 10 minutes I had collected about 60 prime specimens without even climbing a tree, or throwing things at it. This would have been unheard of in my day as all of the conkers in the village would have been scavenged and taken home by my mates or me (maybe for baking or pickling in vinegar to try to gain an advantage if we could!).

Before we could hold our competition I had to read out our Risk Assessment to keep our “Elf and Safety” bods happy.

All of the pre-drilled (no skewers or nails), non doctored (Elf and Safety again) conkers were selected at random by the Scouts, but they had to tie their own knots (more practice required on this part). The draw was done and battle commenced. Nobody broke anything, nobody was injured. Everybody enjoyed the evening. One of our committee members even joined in.

After nearly 2 hours our champion for 2019 was crowned. Well done Timothy.

Ps. Has anyone ever met the person who had their arm broken by a Swan? That is what our parents said would happen if we went too close!

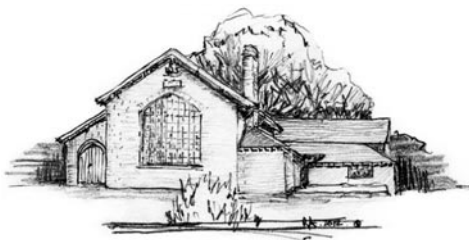
Yours in Scouting

Peter Rayment, 1st Bottisham Scout Troop

Copy deadline for next issue is 10th December.



*Please send material to the editor
at BottishamCresset@gmail.com*



Ristorante Il Piccolo Mondo

85 High Street Bottisham Cambridge CB25 9BA - Tel: 01223 811434

To all our customers, neighbours & friends

*As you have probably heard by now Il Piccolo Mondo will cease trading after
21st December 2019.*

*After 7 years at our Bottisham restaurant & many more years before that elsewhere, we
have decided to hang up our restaurant boots. We would like to thank everybody for their
custom & support and in helping to make 'Il Piccolo Mondo' such a great success.*

With our very Best wishes to everyone. Elia & Polly xxx



Welcome To Classic Spice FINEST INDIAN RESTAURANT

Classic Spice Restaurant and Takeaway is a fully licensed Restaurant and Takeaway located in the heart of Bottisham. Here at Classic Spice we serve a wide range of quality meals, which are freshly prepared using only the best and finest ingredients by our experienced Chefs. You can enjoy our food by Dining in our Restaurant or in the comfort of your home via our Takeaway and Delivery service. We're open 7 days a week.

Location

4 High Street
Bottisham
Cambridge
CB25 9DQ

Special Offer **10%** off Discount on collection order over £20

Order Online at

WWW.CLASSICSPICE.CO.UK

Mon - Sun

5:30pm - 10:30pm

Call Now on

01223 813 599

Free Home Delivery

For Bottisham only

Adult Learning

Our full range of evening courses for January 2020 is now available on our website: www.bottishamvc.org/adultlearning

NEW COURSES INCLUDE:

Design your Own Garden / Italian Spring on the Table (Cookery)
Patchwork and Quilting (Mornings) / Practical Woodwork and DIY for Beginners
Stained Glass / Tango Salon Dancing – Beginners
Vegetarian Indian Cookery (February start) / Creating Glass Jewellery (March start)

Saturday Workshops on 29th February include:

Cook with Your Kids / Digital Desktop Photography (Still Life)
Glass Bracelets, Rings and Brooches / Plant Propagation Workshop
Stained Glass Colourful Suncatchers / Vegetarian Indian Delights (Cookery)

Would you like to suggest a course?

We are always looking for new ideas, so if you would like us to provide a course which is not offered, or you have skills you would like to teach to adults, please let us know.

www.bottishamvc.org/adultlearning; Tel: 01223 811372 email: adultlearning@bottishamvc.org

Facebook: [BottishamAdultCommunityLearning](https://www.facebook.com/BottishamAdultCommunityLearning) or Twitter: [@CommunityEdBott](https://twitter.com/CommunityEdBott)

Bottisham Adult Learning Association (BALA)

There has been a very good response to Bottisham Adult Learning Association. Forty five members have enjoyed a course of lectures given by Ros Connelly on 'London through Literature'.

A new course starts next term when Marina Burrell will be presenting a ten week course on 'Famous Russian Women in History and Culture'. The term begins on Thursday 9th January 10.00 to 11.45 in the Bottisham Sports and Social Club. (No meeting on 20th February for a half term break).

The cost will be £45 for members and £50 for new members (this includes £5 joining fee). Please contact Ann at meadeann7@gmail.com if you would like to discuss the course.

Come along to what should be another good term.

Helen Cole

ANGLIA TREE CARE

LARGE ENOUGH TO COPE • SMALL ENOUGH TO CARE

80% OF OUR WORK IS VIA RECOMMENDATIONS
TREE SURGERY & FELLING • HEDGE MAINTENANCE
STUMP GRINDING • FULLY QUALIFIED
FULLY INSURED • 24/7 SERVICE
All work carried out to BS 3998

Free Estimates Given within 7 days

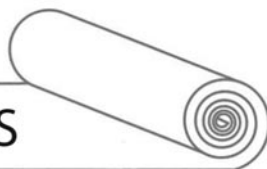


Tel. 01223 424454 • INFO@ANGLIATREECARE.CO.UK

M E M B E R
Guild of Master Craftsmen

PETER FISHER

CARPETS - WOODS - VINYL



A wide range of floorings supplied and fitted.
Please call for a free estimate and select in your home.

Tel: (Bottisham) **01223 811321**
Mobile: **07879 494 685**

Great service for
30 years

District Councillors Report

Clr. John Trapp is on the Planning Committee and thought that residents would be interested in the planning process.

Planning applications can be Outline or Full. For the former the application is only indicative, and is more to do with the suitability of the site, whether access to the planning site (adjudged by the County Council Highways department), flood risk, etc. is acceptable; the Full application has detailed drawings, elevations, dimensions, etc. An Outline application is usually for a larger site, and if that is successful it is followed by the Full application.

Planning applications are submitted to the Planning Department; in some cases the applicant discusses the application before submitting it, and this can save time and effort, as the Planning Officers can give good guidance on what is acceptable or not. The Planning Officers are given delegated powers, and almost all applications are decided by them, based on strict criteria. Sites with more than 50 houses, or those that are contentious, are passed onto the Planning Committee which meets on the first Wednesday of each month.

The Planning Committee members are driven in a minibus to each site, and the case officer gives an explanation of the application on site. The Committee then meets at two o'clock and discusses each case. Interested parties are given five minutes to speak to the committee, and then asked questions by committee members; first any members of the public, then the submitter (or their agent) of the application, then the Parish Council, followed by the District Councillor, although not every one may be present. The Committee then debates the application and a vote is taken.

District Councillors receive a report of all the planning applications in the Ward, and can comment on them. They can also call in a planning application that may be going through delegated powers if they feel that this application needs wider debate, or they have been requested by residents to do so.

We are not holding a Councillors' Surgery in December, so our next surgery is on Wednesday 22 January at 6.30pm in the Poppy Room at the Bottisham Sports and Social Club, followed by meet your Councillors in The Bell from 7.45.

We hope you all have a Happy Christmas.

Parish Notes

In November, for the third month in a row, we welcomed another new councillor to our meeting. Lee Chetwynd who lives in the High Street is now our 11th councillor. We now have only one more vacancy to fill to have a full house!

Following from last month's flooding, our County Councillor Mathew Shuter has asked Highways to carry out a survey on the drains in the High Street and Lode Road. This is to find out if there is a blockage or a drain has collapsed. Highways will also now liaise with the District Council, to ensure that road sweeping takes place prior to cleaning of drains.

Continued on page 13

SG LAW

Plumbing & Heating Services

Cambridge based plumbing,
heating and specialists in
bathroom installations

Services include

- Plumbing
- Heating & Servicing
- Bathrooms
- Commercial

T: 01223 812280 M: 07747552232 E: hello@sglawplumbing.co.uk www.sglawplumbing.co.uk

Saffron Salt Supplies

Water Softener Salt

Salt tablets in 25 or 10kg bags

Block salt in 2x4kg packs

Dishwasher Salt

Granules in 10kg bags

De-Icing Salt

White crystal in 25kg bags

delivery **FREE** to your door
visit our website for full listing

www.saffronsalt.co.uk

Place your order by phone

07980 581815 or email

info@saffronsalt.co.uk



N.C.S.

**BRUSH ELECTRIC SWEEP
ALL CHIMNEYS SWEPT**

- BIRDS NESTS REMOVED
- OIL & GAS BOILERS
- SOLID FUEL, STOVES FITTED
- SMOKE PRESSURE TESTING
- INSECT MESH, POTS, COWLS
- FLUE LINERS SUPPLIED & FITTED
- BIRD GUARDS & TERMINAL FITTED
- GUTTERS CLEANED & REPAIRED
- GENERAL PLUMBING WORK

**FOR FREE QUOTE CALL
07824 727277 or 01638 662760**

EMAIL
NCS.NEWMARKET@YAHOO.CO.UK

WEBSITE
www.ncsnewmarket.co.uk

*Send text or e-mail for 10% discount
Answers within an hour. • Waiting time approx. 1-2 weeks

**VERY CLEAN • Public liability insurance
- Competitive rates -**

Both the County Council and the District Council have declared a climate emergency. The County Council are working with the University to identify what they can do for the environment that will have the most rapid impact. As a large landowner they are also looking into the possibility of planting more trees.

The District Council have agreed that they will not start a new Local Plan for at least 18 months and will instead rely on the old 2015 plan. There were concerns over how this would impact on communities such as Bottisham, who are facing problems with development since the withdrawal of the Local Plan. Our district councillors had asked for a consultation with parish councils, but this was denied. Instead the District Council are encouraging parish councils to have a neighbourhood plan to give them added control over local development. However this is a very time consuming exercise and, when considering the matter previously, Parish Council were informed by the ECDC Head of Planning that they would not permit further development on the greenbelt surrounding the village. With no land to develop on, it was judged there was limited value in a Neighbourhood Plan. We await the outcome of the latest consultation on the retirement village, which took place on 12th November.

Cambridgeshire and Peterborough Combined Authority are looking at bus services in the region and want people's views, whether they are current bus users or not. The survey can be accessed via www.smartsurvey.co.uk/s/FutureBus/ and will be open until Sunday 15th December. There is already a separate consultation with the District Council and we hope that bus services for Bottisham can be greatly improved.

We have been contacted by a representative from the local NHS. Many people get free prescriptions, but can afford to buy over the counter medications such as painkillers, upset stomach treatment, skin creams and vitamins – so saving considerable cost for the NHS. Bottisham is one of the villages where the local NHS spend the most on prescribing medications which can be brought over the counter - it is in fact in the top 5 in the county. They are trying to encourage people, if they can afford to do so, to buy their own medications so the money saved can be spent elsewhere in the NHS.

Many thanks to the scouts and Red2Green, who have been busy planting bulbs in the cemetery and around the High Street. Thanks also to Reg Webb, who kindly put in the bedding plants around the village sign. We will also be replacing the bench outside of the shop which has been repaired several times.

Over the next few months we are looking at doing a survey of footpaths in the village. We did this once before many years ago and Highways built it into their 5 year plan of improvements.

As we reach the season of potholes please be aware that if you see any potholes or other problems with the roads you can report this online yourself at: www.cambridgeshire.gov.uk/residents/travel-roads-and-parking/roads-and-pathways/roadworks-and-faults/ They are usually quite quick to come and repair any problems although obviously during the winter they are responding to many reports of potholes and this can take a bit longer.

Finally it only leaves me to say Merry Christmas to one and all and best wishes for 2020.

Claire Fullwood – Parish Clerk

M&P

LANDSCAPE AND DESIGN

Patios, Block Paving, Fencing,
Turving and all Gardening needs.

References available on request.

Local tradesman • Free estimates

PLEASE CALL

01223 811144

MOB **07837 358550**

N & G Marsh of Burwell Engineers

For all your metalwork requirements

- ❖ Welding Services
- ❖ Handrails
- ❖ Security Bars
- ❖ Gates
- ❖ Mower Repairs
- ❖ Tow bars
- ❖ Metal Railings
- ❖ RSJs Supplies

Services to the Building Industry
Tractors & Agricultural Machinery
Repaired

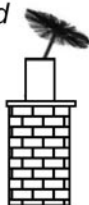
Tel; 01638 741354 or 741 926

R. BRISTLEY Est. 1974

9 Collings. Place Newmarket CB8 0EX

BRUSH ELECTRIC SWEEP

- All Chimneys swept
- Solid Fuel, Oil and Gas
- Cows, Nets and Pots fitted
- Carpets Cleaned
- Stoves Serviced
- Competitive Prices
- Very Clean
- Public Liability Insurance



*also Classic Wedding Car Hire
White Citroen DS21*

Tel: 01638 662439
www.rbristley.co.uk

JCM

*Property Maintenance
Ltd*

**For the best in
Renovation,
Redecoration
& Repair**

Contact Joel Clarke-Morgan
On 07885 586229
or e-mail; JCM@weyr19.co.uk

www.jcmpropertymaintenance.co.uk
47 Edinburgh Rd, Newmarket CB8 0QE

Planning Notes

19/01442/VAR, Land rear of 8 Lode Road, Variation of Condition 1 (approved) of decision notice .

16/00416/FUL dated 5/8/16 for detached 3 bed one and half storey dwelling NEW APPLICATION.

19/01179/FUL First Copy Corporation Ltd, 187 High Street, Erection of four dwellings NEW APPLICATION.

19/01514/FUL 8 Bell Road Two storey extension, APPLICATION APPROVED BY ECDC.

**new venue
for 2019**

CHRISTMAS FAIR

Est. 2013 at
ST MARY'S CHURCH *in* SWAFFHAM BULBECK CB25 0LX



SATURDAY 7th DECEMBER 10am - 2pm

Gifts, jewellery, crafts, cushions & beauty products
Homemade pastries & cakes, freshly baked bread
Stylish table decorations & wreaths & much more...



Delicious frozen food to help you entertain over Christmas

ENTRANCE FREE incl. a mince pie & a glass of mulled wine

BRING FRIENDS

Copy deadline for next issue is 10th December.



*Please send material to the editor
at BottishamCresset@gmail.com*



**Our roots are in
your community**

**Every home
we sell or let, we
will plant a tree locally**

IN PARTNERSHIP WITH



Bush is one of Cambridge's leading sales and letting agents and we offer expert advice and a full professional service to property owners in Bottisham.
Discover the **Bush** difference and join us on our **GREEN** journey



01223 246262
bushsales.co.uk



01223 508085
bushlettings.co.uk



Established. Independent. Passionate.

WANTED

**POLITE, LOCAL BUSINESS EST. 25 YEARS
IS LOOKING TO BUY THE FOLLOWING:**

- Furniture • Quality jewellery and Costume jewellery • Collectables • China, glass, ceramics • Old toys • Silver, silver plate, old copper & brass
- Militaria - uniforms, medals, weapons • Old tools
- Old garden ornaments • Anything considered

Polite & confidential service. Good prices paid.
Please call: Steve Durrant 01638 507037 / 07740 591194

Bottisham and District Gardening Club

PROGRAMME 2020

Monday 16th December 2019

Christmas Meeting 2019 - Another good year, *Sylvia and John Overton*

28th January 2020 **A History of Gardening in England**, *Nigel Start*

25th February **The Art of Composting**, *Chris Field of Field Compost*

24th March **The use of Konik Ponies and Highland Cattle in Wicken Fen Wetlands**, *Peter Green*

28th April **Unusual Shrubs for the Garden**, *Hedgehog Plants*

26th May **Fuchsias – The Three Virtues**, *Nick Dobson*

23rd June **Summer Social and Don Bedford Cup Rose Competition**

July **Summer Outing**, Details to be advised

August **Evening Outing**, Details to be advised

22nd September **The Flora, Fauna and History of Mill Road Cemetery**, *Caroline Wilson*

27th October **A.G.M.**

24th November **Lancelot Brown – Just How Capable was He?**, *Pippa and Steve Temple*

BOTTISHAM LOCAL CHARITIES TRUSTEES

- Local Charities can offer support to people with a minimum of two years residence in the village.
- If you receive additional state benefits for pensions, housing or disability you may be eligible for help with household bills.
- If you are starting a course of HIGHER EDUCATION you can apply for help with buying text books and equipment.
- If you are starting an APPRENTICESHIP you can apply for help with buying tools, text books and equipment.

FUNDS ARE AVAILABLE and IT'S WORTH APPLYING

GILES BREAM PENSION FUND

Applications are also invited from widows or widowers to receive a quarterly cash pension from the above charity. Applicants must have lived in the Parish of Bottisham for at least seven years.

Please contact the clerk to the trustees for an application form. All applications will be treated in the strictest confidence.

For further information or an application form
e-mail the Clerk - Samantha Bramley bottishamlocalcharities@gmail.com or
Tel. 07725 512497

SOMETHING TO SUIT EVERYONE

Air conditioned fitness suite including:

- Zumba,
- Spin,
- Pilates
- Kettlebells and much more!
- 25 metre, 4 lane swimming pool
- even birthday parties!



For availability and bookings
simply contact 01223 811121 or
email sportcentre@bottishamvc.org



Bottisham Village College
Sports Centre

MEMBERSHIP ONLY £23.50 Including Swim, GYM, Badminton, Tennis & Fitness Classes

BOTTISHAM SPORTS CENTRE GREAT VALUE

SWIM LESSONS
START
AT **£20** PER
MONTH



facebook.com/BottishamSportsCentre

For more information call **01223 811121**
or e-mail: sportcentre@bottishamvc.org



Bottisham
Sports Centre



Bottisham Community Sports and Social Club

CAMRA Cambridge and District Club of the year

NEW WEBSITE- www.bottishamsocialclub.co.uk

The website now has details of all beers being sold with the guest beers regularly updated. If you haven't previously been in the club have a look at the website then come and give us a try. Membership £20 per year.

TAKE A LOOK AT THE WEBSITE CALENDAR FOR FUTURE EVENTS.

On Saturday 19th October, BCSASC held its first charity pool and poker event for Sepsis UK. It was led by Alan Dennis and the rest of the pool team following the death of Morgan 'Mogs' Wright earlier this year. Morgan was a key player for both the pool and bar billiards teams, so it seemed a fitting tribute. The event was hugely successful with family, teammates and school friends, some travelling from as far as Hartlepool and Brighton! Over £1000 was raised on the day and a further £363 raised the previous week at a poker competition at WT's arranged by Lee Mason.

Alan Dennis was the eventual winner of the pool competition, beating Martin Bond in a thrilling final! Malcolm Wright presented Alan with the trophy.

Table Tennis - The club is now playing in the Ely and District League, and it is looking for players to add to the squad. Speak to Kate at the bar if you are interested in joining.

WHAT'S ON

DECEMBER 16TH – CAROLS WITH NEWMARKET TOWN BAND

(7.30pm to 9.30pm) plus grand draw.

New Year's Eve - See the New Year in with All Glamed Up.

JANUARY 4TH- FAMILY SNAIL RACING- 4pm to 7pm- This event was very popular last time we held it. Both Children and adults loved it.

AGM - Monday 13th January 2020

EVERY FRIDAY NIGHT- PLAY YOUR CARDS RIGHT (Jackpot over £2,000 at time of going to press)

MEMBERS DRAW - Between 9pm and 10.30pm- Just be in the club to win.

Also, Meat Draw every Friday night.

BT Sport and Sky Sports available throughout the year. Why not come along and watch your fa-vorite team with company and a great pint.

Don't forget the regular activities for you to join in and enjoy

Darts / Pool / Snooker / Billiards / Cribbage / Dominoes / Bar billiards/Table Tennis

Also Hall and Poppy Lounge room hire available for all your functions

Well behaved dogs are welcome in the main hall and must be kept on a lead.

bottishamcsasc@gmail.com www.bottishamsocialclub.co.uk

31 Downing Close Bottisham Cambridge CB25 9DD Tel. 01223 812063

D.K.TILL & SON IN LAW

COAL AND SOLID FUEL MERCHANTS

Family run business for 40 years
Coal, Logs, Charcoal, Gas, Compost

TEL: David Till; 01223 232947 - Kevin Crisp; 07523044521
Email: dktil@hotmail.co.uk

R & S SERVICES

PICTURE FRAMING

For all your framing requirements including
Tapestries, Notice Boards, Certificates,
Ready-made Frames and Mount Cutting

Rear of:

128 Fulbourn Old Drift
Cherry Hinton
Cambridge CB1 4LR

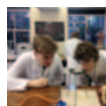
Proprietor:

Roy Northrup

Tel: (01223) 243077



LANDMARK
INTERNATIONAL
SCHOOL



A small international school in Fulbourn, South of Cambridge,
welcoming pupils aged from 4 to 16 years.

We have experienced and enthusiastic teachers delivering a broad and engaging curriculum to small classes of pupils from Britain and beyond. We offer excellent pastoral care and are non-selective academically. Transport via school minibuses from central Cambridge and surrounding villages.

To arrange a visit, please call:

Mary Greer on 01223 755100/07400 584015

or email mary.greer@landmarkinternationalschool.co.uk

www.landmarkinternationalschool.co.uk

Landmark International School is a registered charity.

News from Bottisham Medical Practice Patients' Group

Good News, Congratulations and Thanks: Four GPs at Bottisham Medical Practice (Drs Allum, Keith, Harrison and Thijskens) were awarded "certificates for excellent teaching" by Cambridge University and were nominated by students who had been at the practice. There are only a handful of awards given out each year so to get four within one practice is a real achievement and unusual. We thank all our patients for participating in medical student teaching and allowing students to be involved in their care. Without your commitment to teaching we could not be involved in the development and training of your future doctors.

Missed Appointments: There are still far too many of these so if you are not going to attend your appointment then PLEASE cancel it with the surgery so that other patients are not having to wait longer to get an appointment.

Flu Vaccination Clinic: If you have not already had your 'flu jab or booked to have one then please do so there will still be appointments available.

The cake sale held at the first Saturday clinic raised £270.98. for Arthur Rank Hospice at Home to extend night care provision, thanks to all who contributed.

Purchase of Equipment: Doctors have given us a list of items that would be particularly helpful for them to have and it has been decided to purchase all the smaller items which are diagnostic and examination tools. The Doppler machine, for checking blood circulation in diabetic patients is nearly £1500 so this is our next target.

Walks for Health: The next walks with our accredited walk leader Steve Gilson start at 11.00 am from the surgery car park on 6 December 2019, 15 and 31 January, 12 and 28 February 2020. Do join Steve for a walk he would be delighted to see you. Walks from Anglesey Abbey continue on Thursdays at 10am from the reception area.

Next Patient Group Meeting: Next meeting will be Thursday 23 January 2020 at 6.30pm at the surgery.

Bottisham Patients' Group



Copy deadline for next issue is 10th December.

*Please send material to the editor
at BottishamCresset@gmail.com*



SANICLEAN

DRAIN & PLUMBING SERVICES

R. BRISTLEY Est. 1974

9 Collings Place, Newmarket

- *Drains Unblocked Fast*
- *Toilets, Baths and Sinks*
- *Guttering and Downpipes*
- *Drain repairs and CCTV Surveys*
- *High Pressure Water Jetting*
- *Domestic and industrial*
- *All Work Guaranteed*

Newmarket (01638) 662439

Mobile 07970 038404

www.rbristley.co.uk

Fit to live life – for the rest of your life!

MOVES *Fitness*

QUY VILLAGE HALL

Mondays 8:00pm – 9:00pm

Dance aerobics for health & fitness

EVERYONE WELCOME

£5.00 per session

Exercise really can be this much fun!

Contact Mel Wilson for more information: 01223 811109



Find me and Moves Fitness on Facebook

mel@mwilson04.plus.com
www.movesfitness.com



My love for dogs

An alternative to Kennels

A personal, caring approach to dog care.

In our home, your dog will receive two hour-long walks every day as well as treats, socialisation with other dogs and the administration of any required treatments.

- Fully insured and police checked
- Licensed by Sth. Cambs. District Council.

For further details call Amanda on
07903 806750

Based In Steeple Morden near Royston.

BURY CATTERY

*Offer
Full Boarding
Services for
Cats only*

**CAMBRIDGE
811945**

Anglesey Group Mothers' Union Report

For our October meeting, members were invited to bring along a photograph, postcard or picture of their choice to share with fellow members the significance and meaning it held for them. Photographs included family events, including engagement, weddings, family Christmas, and family seaside groups. Timespan for these ranged from the old sepia photographs to laptop images and a photograph taken very recently in Australia, of a much adored 3 week old grand-daughter. Others included local social events, family pets and places of special significance. Postcards were of famous paintings, hand embroidered cards from WWI and modern day postcard written by a 4 year old.

One member brought along one of her watercolour paintings of a wren, and another a favourite poem she had kept for many years.

During the meeting we held our Autumn Bring and Buy Stall which raised approximately £40.

In December members and husbands will be having Christmas Lunch at Scotsdales Garden Centre in Fordham.

Sales, Wants and Swaps



IF YOU HAVE ANYTHING TO SELL OR WANT TO BUY OR EVEN TO SWAP, THEN THIS PAGE IS YOURS TO USE. Send details of Item, price and landline Phone Number to BottishamCresset@gmail.com. Max. 5 Items. Entries by 12th of the month for next months issue.

DESCRIPTION	PRICE	TEL
Home air conditioner: requires exhaust out of window.	Free	811104
Basic sewing machine, perfect for a beginner	Free	811104
Trouser Press	Free	811104
Dressmakers Dummy	Free	811104
WANTED – Sony Walkman style personal tape player for C90 tapes		811478

Copy deadline for next issue is 10th December.

Please send material to the editor at BottishamCresset@gmail.com

Have you thought of advertising your business in ***The Cresset?***

Email the Editor for details: BottishamCresset@gmail.com

K.J.P.

Building/Maintenance



Including:

Design, landscapes, patios, fencing,
gardening, decking, painting,
decorating, tiling, all interior work,
etc.

**Tel: 01223 812021 or
mobile 07799 504043**

P. Marsh Electricals & Household Maintenance

(Kitchen & Bathroom Refits)

Part-P NICEIC registered Electrician

Testing and certification of electrical systems
Periodic Inspections
Fault finding and repairs
Fuseboard upgrades
New Installations
Full / partial rewiring
Sockets
Lighting
Showers (all types)
Power to sheds / garages
Security and outdoor lighting



General household maintenance from a
dripping tap to a full kitchen/bathroom refit



**01638 744 281
07941 107 321
(Based in Burwell)**

www.pmarshelectricals.co.uk

**FREE
Estimates &
Advice**



BRADSTONE

- All Driveways & Block Paving
- Site & Garden Clearance
- Driveway Cleaning & Sealing
- Fencing, Trellis Work & Decking
- Patios & Paths
- Turfing & Seeding
- Concrete Crushing
- Grab Hire & Digger Hire

amsbuildingandlandscaping.co.uk

OFFICE: 01638 721 893 | SITE: 07789 261 266

Rayment's

• Vehicle Servicing & Repairs •

Diagnostic Specialist

MOTs | Servicing | Tyres

Cambelts | Brakes | Air Con

8 Townsend, Soham, Ely, CB7 5DB

01353 655136

raymentsvehiclerepairs@outlook.com

www.raymentsvehiclerepairs.co.uk

OvenPad Cleaning Services

I will professionally & efficiently
clean ovens, ranges, Agas,
ceramic hobs, extractors,
microwaves and BBQs.

**It's a dirty job, why
not give me a call?**

Contact **Paddy Kelly** on

Tel: 01638 742703

Mob: 07752 631343

Email: info@ovenpad.com

Website: www.ovenpad.com

ANDREW EVANS

01954 780 999 – 01223 864335

email: andrew@omegaclean.co.uk

www.omegaclean.co.uk

- ✓ Carpet Cleaning
- ✓ Upholstery Cleaning
- ✓ Tile & Grout Cleaning
- ✓ Leather Cleaning
- ✓ Oriental Rug Cleaning
- ✓ Carpet & Fabric Protection
- ✓ Allergy Relief Treatment
- ✓ Odour Eradication
- ✓ Stain Removal
- ✓ Carpet Fitting

Family Business Since 1980



PEST PROBLEM?

CALL DRE PEST CONTROL

01954 230708

07789 502556

- Commercial & Residential
- One - off Call Outs
- Management Contracts

Cambridge & surrounding areas
www.drepestcontrol.co.uk



Firstly, a huge THANK YOU to all who recently supported EAAA by coming to a Coffee Morning and Christmas Card Sale– the amazing sum of £504.50 was raised.

If you are reading this, the chances are that you will not have had the need to be at ‘the sharp end’ of what we do. But there are an increasing number of people who do owe much, often their lives, to the Charity.

Whether you have watched Helicopter ER on TV or read a patient’s story, you cannot help but be impressed by the amazing work that these extraordinary people are called upon to do, often under extremely arduous circumstances.

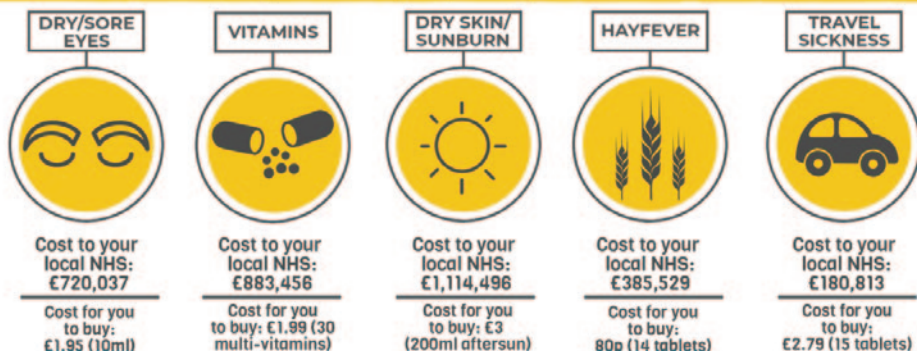
They will be ‘on call’ over the Christmas period – ready to fly, ready to save lives. Like that of ‘Steve’ who, on his motorcycle, overtook a car which, without indication or awareness of Steve, turned into his path catapulting him through a wall and into a watery ditch. Steve was still unconscious 21 minutes later when the Anglia One crew arrived. They thought that Steve would not survive the traumatic head injuries he had sustained. He was sedated and intubated so that the crew could control his breathing, and flown to Addenbrooke’s Hospital where he remained for ten weeks. Three months after the accident, Steve visited the Norwich base to thank the EAAA team and EEASt paramedics for his life! With no lasting effects from his injuries, Steve went on to make a full recovery.

If you would like to find out how you too might support EAAA, please contact the fundraising team. At this time of year, with so much receiving and giving going on, please spare a thought, and a donation, to help support EAAA continue their vital work. Next time you see a red EAAA collection box please help to fill it – ‘every little helps’ !

Together, we really do save lives. - Michael White

DON'T SWALLOW UP YOUR NHS

Your local NHS spends MILLIONS prescribing medicines you can buy from local pharmacies, shops or supermarkets



Save yourself time, and the NHS money, buy your own if you can.

NW BROWN

— WEALTH MANAGEMENT —

Providing bespoke solutions to your
financial planning and investment needs

01223 357131

www.nwbrown.co.uk

NW Brown Wealth Management is a trading name of NW Brown & Company Limited. NW Brown & Company Limited is authorised and regulated by the Financial Conduct Authority (191123).

TV AERIALS

SATELLITE

DIGITAL FREEVIEW

Installations

Extra points etc.

Tuning in of TVs, Digiboxes etc.

Experienced local engineer

RICHARD FORTEY

01638 662119

No Call Out Charge

It's beginning to look a lot like Christmas at Red2Green. We are looking forward to our Christmas Carol Service followed by a Christmas bazaar. The service will be at 11am on Thursday 12 December at St Mary's Church, Swaffham Bulbeck and will be followed by nibbles, **Mistletoe and (mulled) Wine** and Christmas Bazaar at Harvey's Barn, Park End. Do join us for both, and do some christmas shopping with our crafts made by our learners. Last Christmas we had a lot of fun, and can't wait for This Christmas. Our craft activities are well underway with producing gifts and decorations so you can Deck the Halls.

There's a happy feeling nothing in the world can buy when they pass around the coffee and the pumpkin pie and if you can't make the bazaar we will be selling our gifts and decorations at the Red2Green Community Café, so pop along for some homemade soup, a bacon bap or some of our daily specials homemade cakes (see our Facebook page or website to find out what they are). Open Tuesdays and Thursdays 10am-3pm.

It's the most wonderful time of the year for music here, we have our own **Little Drummer Boy** in our music sessions on a Monday and soon we'll be **Rockin' Around The Christmas Tree**.

Recently we raised a lot of money through walking and running. Jackie and Liz ran Lode Half Marathon (at times it felt like 2000 miles, even if it only was 13.1!) and some learners walked the 5K with their tutors. We are really grateful to Lode Runners for giving us the places.

We wish you a Merry Christmas and a Happy New Year

REMEMBER THE GREAT VILLAGE FETE IN JUNE THIS YEAR?

Following the success of last summer's Community Fete,
a similar event is being planned for

Saturday 6th June 2020
on the Primary School Field

All organisations from the village and surrounding villages are welcome to take part in the event.

It is again intended to be a fund raising/showcase event for the benefit of your organisation.

There are no pitch fees and any funds raised are to be kept by your organisation.

If you would like to have a stall or pitch, to share your ideas, or if you would like to volunteer some time and be involved in the planning of the Fete,

please email bottishamvillagefete@hotmail.com

The Village Fete for all the Village.

Paying too much for your glasses?

Save Money - Buy Direct!

Visit our factory shop to see our fabulous range of Discount Prescription Eyewear

- Hundreds of frames to choose from, including designer frames from Ray-Ban, Polo Ralph Lauren, Oakley, PRADA, Ted Baker and Versace
- Specialists in high and complex prescriptions
- Same-day or next-day service available*
- Save up to 75%
- Huge range of designer sunglasses
- Full range of sports eyewear

Official stockists

*subject to prescription and availability



POLO
RALPH LAUREN



PRADA
EYEWEAR

TED BAKER
LONDON

VERSACE

We are open 9am to 5pm Monday to Friday, and 9am to 1pm Saturday



ALL EYES
SPECTACLE MAKERS
— SINCE 1987 —

Call us

01954 231545

Visit our website

www.all-eyes.co.uk

20 Norman Way Industrial Park, Over, Cambridge CB24 5QE

SN Handyman Services

A friendly and reliable service for all
your general home and garden maintenance.

- Painting & Decorating (interior/exterior) ► Garden Maintenance ► Tiling & Glass
Splashbacks ► Gutters Cleared & Repaired ► Power Washing Patios ► Sealant
Replacement (bathroom/kitchen) ► Curtain Poles & Blinds
► Flat Pack Furniture (assembly) ► Shelf Fitting ► Small Glazing
► Conservatory Cleaning ► **and more...!**

Free estimates & advice given on all work

References available upon request.

PLEASE CALL

Steven Newton ► 07713 859712 ► 01223 813701

50 Commercial End ► Swaffham Bulbeck ► CB25 0NE.



Christmas is approaching! The time of year when we like to enjoy a tipples with friends, cook up festive feasts and entertain friends and loved ones. With all the fun to be had it is easy to be distracted when cooking in the kitchen.

50 per cent of all fires in the home start in the kitchen and more than half of those are as a result of distractions whilst cooking.

We want to help ensure that your festive cheer doesn't go up in smoke this Christmas by sharing the following tips for safe cooking over the festive season.

- Never leave cooking unattended.
- Do not cook when tired or under the influence of alcohol, drugs or medication that make you drowsy.
- Regularly clean the grill pan and oven. Built up fat can easily catch fire
- Do not leave anything flammable on or near the hob – tea towels, oven gloves and even washing baskets can catch fire.
- Take care when using microwaves - fires can start when food is put in for too long.

Oven chips or temperature controlled deep fat fryers are safer than using a chip pan. If you do use a chip pan, do not fill it more than one third with fat – turn down the heat if it starts smoking – the precursor of fire !

Fire can break out within large household appliances so please regularly maintain your dish-washers, washing machines and driers - never leave them on when you go out or go to bed. Always register your appliances online for warranties and to ensure that you are made aware of any faults or recalls.

Have a working smoke alarm on each floor of your home. If one keeps going off when you are cooking it is probably in the wrong location, or you may have the wrong type of alarm.

Never take the batteries out of your smoke alarm.

If you do have a fire in the house - get everyone out, call 999 Fire and Rescue and stay out – NEVER re-enter until safe to do so.

Keep testing those Smoke Alarms - THEY SAVE LIVES.

From all at Cambridgeshire Fire and Rescue Service - have a very Happy Christmas.

Michael White

For more information or to get in touch contact us at firefire@cambsfire.gov.uk or on 0800 9179994.

Like us on Facebook for regular updates www.facebook.com/cambsfrs or follow us on Twitter @cambsfrs.

Copy deadline for next issue is 10th December.

Please send material to the editor at BottishamCresset@gmail.com

Have you thought of advertising your business in **The Cresset**?
Email the Editor for details: **BottishamCresset@gmail.com**

Email info@angliarhearing.co.uk

AN INDEPENDENT AUDIOLOGY CLINIC BASED IN CAMBRIDGE

Hearing Tests

Free Hearing Tests
Detailed Hearing Assessments
Most Up-To-Date Testing Methods

Hearing Aids

Get a hearing aid in a matter of days
Free 30-day no-obligation trial

Ear Wax Removal

Micro-suction • Irrigation • Video Otoscope

Tinnitus Treatment

Fast appointments. Many treatment options
Member of British Tinnitus Assoc.



Grain House, Mill Court, Great Shelford, Cambridge, CB22 5LD

BOOK ONLINE! www.angliarhearing.co.uk • Phone 01223 661399



Saplings

Preschool Playgroup

Based in Bottisham School grounds, we offer lots of fun and structured play with caring, qualified staff in a safe environment.

For 2 years old onward, Monday to Friday
Morning sessions 9am - 12noon

Spaces available for this term

Call **01223 813 226** or see our
website at **www.saplingsbottisham.co.uk**



Stitchshed Sewing

(Formerly Little Stitches)

Repairs and Alterations

I am based locally and can help you with clothing alterations & repairs, curtains, blinds and cushions

Sewing Classes

If you wish to learn to sew, then please call for a chat.

Classes at the Stitchshed or private home tuition available for:

Dressmaking
Patchwork and Quilting
General craft sewing

Getting to know your sewing machine!

Tel: 01638 745160

Mobile: 07449 954590

Email: stitchshed@gmail.com

Web: www.stitchshed.blogspot.com

Little legs of Lode Montessori Nursery



Passage Hall
Lode



We have spaces for children aged from 2 years onwards each morning in term time.

The Montessori method allows children the freedom to be creative, to learn and to develop at their own pace in a calm environment.

Please contact Sharon for a prospectus or to arrange a visit.

sharonmaskall1@gmail.com

Tel: 07572 121463

Morgans Hairdressers

Tel: 01223 811646

Creative styling for the family

- Creative cutting
 - Hair up
 - Colouring
- Colour correction
- Perming

Open: Tuesday - Saturday, Wednesday
until: 8.00pm



10 Herschel Court, High Street,
Bottisham, CB25 9DQ



Follow us on facebook



footprint

Signs & Graphics

The Complete Local Signmaking Service

- All aspects of Vehicle Signage
- Window Graphics & Etching
- Safety Signs
- Shop Fascia's
- Labels , Stickers & Magnetic's
- A-Boards
- Banners
- Full Colour Digital Printing
- Solar Films & Etched Vinyl

Have you a picture you would like on Canvas?

07900 606400
01223 214294

www.footprintsignsandgraphics.com
info@footprintsignsandgraphics.com

SUMMIT



LANDSCAPES

PAVING - DRIVEWAYS - BRICKWORK
CARPENTRY - GROUNDWORKS



www.landscapingpaving.co.uk

PHONE: 01223-929394

Public Transport Matters

The 11th of November has just passed and someone rang the local radio this morning to praise the display that Stagecoach has carried on the front of its buses alternating with the number and direction of the bus. It had a poppy and a tribute regarding the 11th. At the recent second Public Information Event in Bottisham several people challenged the presenters' assumption that there was an excellent bus service for the local villages which would serve their development on the High St. I pointed out that if they got the bus to the shops, they would then have to wait an hour to come back. We suggested that they could have discussions with local councils, who all seem to be looking into this matter. It is important that we support the present bus service so that it doesn't get cut even more. I understand that the restoration of the evening and Sunday services is under discussion with councillors but when a local company did try to run a Sunday service between Newmarket and Cambridge with a stop at Bottisham I was usually the only one using it between Newmarket and Bottisham. It combined picking up the wives and families of prisoners at the station and taking them to the local prison after it had dropped me off at Bottisham from Newmarket. With no evening buses, students at sixth form colleges and commuters can have problems and villages like Lode and Reach are poorly served for even getting to school and work in the morning.

Stagecoach say that the 11 route is under review but there are no plans for changes at the moment. James Palmer talks of bus franchising. The Greater Cambridge Partnership has asked for peoples' views on transport. We continue to assure Stagecoach that paper timetables are still required. I am presently trying to source paper train timetables. None at Cambridge North. The proposed routes for a bus service from Cambridge to Cambourne have been criticised regarding the safety of cyclists. There is an improved bus route in Ely called the Ely Zipper. It goes to Lancaster Business Park near Witchford from Ely station with an hourly stop at a new bus stop in Wellington Road. It is run by Dews Coaches. Local councillors have helped in this matter and extra funding has been provided. It links the Business Park to the station and will help commuters. It also links local villages – Ely to Wilburton then Haddenham and Witcham. A season ticket is available. The A14 roadworks have affected the A/D Guided Busway causing the closure of some stops. It should have been for just two weeks but has had to be extended for almost three months. It will still serve the Regional College.

The deal has been concluded for a new £21 million rail station at Soham. Network Rail has been contracted by the Cambridgeshire and Peterborough Combined Authority to build the new station and footbridge, car and cycle park, plus access road with a bus turning circle. Work is scheduled to start next year with a view to open in 2022. If another line could be added they could expand to two platforms. More routes, carriages and seats and better WiFi are promised with more than £1.4 billion being spent on 169 new trains for the Greater Anglia Service, as well as a £27 million upgrade between Cambridge and King's Lynn to accommodate longer trains. More trains in more places promises Paul Plummer of the Rail Delivery Group. He understands that people want a better railway. It should drive economic growth, increase productivity and help set Britain up for success in the long term. Mike Cherry, national chairman of the Federation of Small Businesses, says that they rely

continued on page 39



**BOTTISHAM
MEETING POINT**

every
WEDNESDAY
10.30am - noon

in the Poppy Lounge
at the Sports & Social Club

A place where you can meet old friends, make new friendships, relax, chat and enjoy coffee, cake and biscuits in a friendly relaxed atmosphere.

EVERYONE WELCOME

ADMISSION FREE



BOTTISHAM

SCHOOL OF MOTORING

Tel: 811556

***All qualified instructors
with extremely high
1st time pass rates***



Martin Ball

Firewood & Timber Merchant

www.martinballfirewood.co.uk
martinball.firewood@btconnect.com
01799586513 01371830503 07980258003

on Britain's railways to meet clients, attend meetings and ensure their staff can get to work so investment in the network is very welcome. The investment report, *In Partnership for Britain's Prosperity*, was initially published two years ago with 2,500 new carriages and 4,000 extra weekly services already introduced since then. The report detailed how more than £50 billion of investment over the following 10 years would deliver an estimated £65 billion of economic benefits. Operators have committed to 11,300 extra trains per week by the middle of the next decade, a ten per cent increase, and 8,000 new carriages. National Express will soon have more buses in Casablanca than in Britain after signing a 1 billion euros bus contract. They have a Spanish and Moroccan division. They are also the second biggest operator of school buses in America. They operate in North Africa and the Middle East. It runs trains in Germany. It controls 60 % of the UK coach market. Operating profit rose 14.5 %.

Grant Shapps has been considering taking Northern Rail out of private ownership and placing it in the hands of a state-owned operator. This is due to its delivery of poor punctuality by its trains. It has been difficult to get compensation payments for delays. Northern is run by the German state-owned Arriva. It has been asked to offer its own proposals for improvements to the service. Northern covers services from Carlisle and Newcastle down to Liverpool and Nottingham. There have been strikes and delays and a botched introduction of a new timetable last summer. Virgin Trains East Coast is already in state hands. Train operators were privatised in the 1990s. Privatisation has delivered improvements. Passenger numbers have more than doubled. Safety has improved. But all this is expensive – companies have pumped £5.6 billion into the railways. The arguments over HS2 continue – cancel/continue? Crossrail is delayed by another year. Diesel trains could be axed before 2040. Old drop train windows are scheduled to be replaced after a woman was killed by leaning out of a carriage and being hit by a trackside branch. Eurostar has benefited from the environmental concerns ref. flying. You see more when you don't fly – its advt.

Chaos on the trains is forecast for the Christmas period – check your travel plans. National Express coaches usually run over Christmas but I haven't checked this year's plans yet. On the 9th November Eurostar celebrated 25 years of providing high speed rail travel between the south-east and the Continent. You can now go not just to Paris but way beyond – Lille, Amsterdam, Lyon, Avignon, Marseille and the French Alps.

Rail info: 03457 48 49 50 Traveline: 0871 200 22 33

Happy travelling! - Paddy James

Copy deadline for next issue is 10th December.



*Please send material to the editor
at BottishamCresset@gmail.com*

D.S. FREEMAN

Painters & Decorators

- Residential & Commercial
- Interior & External
- Fully Insured
- All Aspects Undertaken

duncan@dsfreeman.co.uk

Tel: 01223 812920

Longmeadow

ALAN R. COOPER

BSc(Hons)Pod. M.Ch.S

Podiatrist/Chiropodist • Newmarket

(Est. RC Cooper SR Ch.1934)

Routine Chiropody & Home Visits
Ingrown Toenails by Local Analgesia
& Footwarts by Cryosurgery (freezing)
Biomechanical Assessment + Orthosis
Instruments sterilised by Autoclave

TELEPHONE 01638 662840
4 Market St., Newmarket CB8 8EE

GERMAN LANGUAGE COACHING

Native German Speaker
Qualified Teacher
Coaching to GCSE level

Karin Hulme 812669

E.J. DENSTON

KITCHENS & CARPENTRY

All aspects of Carpentry & Joinery
New Build 1st & 2nd fix carpentry
Purpose made cupboards, wardrobes
& Bookcases
Kitchens supplied & fitted
Renovations & small build works



Tel: 01223 813279
Mobile 07711 578687

Carpentry Services TONY MARTIN

Over 30 years experience

***Any carpentry jobs
undertaken — BIG or small***

Call Tony
for a free estimate
Tel: 01223 812786
(Bottisham)
Mobile: 07767475987

T
P
M



**Taylorred
Property
Management**

Your letting property is a key asset in your life, ARE you getting full value from it?

If you are not and you want a service that will release it's full potential and a free rental appraisal then come to the people that are able to offer you a "Taylorred" package to suit your needs.

We offer a full comprehensive property management service, just as though the property was our own all at affordable rates to suit you:

FREE Energy performance certificate

FREE Initial letting fee

For your own personal service contact

Steve Taylor on 01638 741717 or 07753 272765 or email steve@taylorredpm.co.uk
9 Station Gate, Burwell, CB25 0BZ



CHAPEL
DENTAL

84 Angle End
Gt. Wilbraham
CB21 5JG

Tel: 01223 811844

Claire Jackman BDS & Associates

NHS, DENPLAN & PRIVATE TREATMENTS

With special interests in implants and orthodontics

Monday / Wednesday / Thursday / Friday 09.00-17.00

Tuesday 09.00-19.00 Saturday 09.30-15.00

New Patients Always Welcome

www.chapel.dental

S. NEAL *Carpentry and Small Works*

Offering a high quality carpentry and small works service in Bottisham and the surrounding area.

FLOORING • HANGING NEW DOORS
KITCHEN RENOVATIONS • DECORATING •
TILING • LANDSCAPING
BESPOKE CARPENTRY



07703 043243

SNealCarpentry@Gmail.com
@S.Nealcarpentry

Dale Parker

*Landscape Gardener
and Tree Surgeon*

Turfing, Seeding & Planting,
Patos and Drives
Block Paving & Natural stone

Trees

Topping, Lopping,
Shaping and Felling
Hedge Cutting
Fencing

FREE ESTIMATES

Tel: 01284 728497

Mob: 07799 671010



ONG

“Successful entrepreneurs are
givers and not takers of
positive energy.” ANONYMOUS



codge.com

info@codge.com

01449 675 548

Design & Origination • Website Design & Maintenance • Email Marketing • Digital Publishing
• Logo Creation • Cartoons & Illustrations • Theatrical, Product Photography & Retouching •
Business Stationery • Promotional Flyers & Posters • Newsletters & Magazines • Programs &
Catalogues • Books & Brochures • Calendars • Reports • Signage, Displays & Banners •
Personal & Wedding Stationery • Mac Training



Are You Paying Too Much For Your Medical Insurance?

Independent And FREE Advice

- **Switch to an alternative scheme** – If you are currently insured, switching to a competitor can mean ***substantially lower rates***
- **Pre-existing conditions covered** – It is often possible to include pre-existing medical conditions currently covered by your existing provider
- **Improve your coverage** – We can frequently improve your cover whilst also lowering the cost of your premium
- **Complexities of different schemes** – In many cases, people are over insured – we can ensure you are covered with a scheme that meets your individual needs and requirements
- **Full cover for cancer treatment** – Many policies do not cover cancer in full – we are able to advise on your current level of coverage



For further information, please call Simon Lively at
M&L Healthcare Solutions:-

FREEPHONE 0800 145 5838 or 01223 881779

Email: simon.lively@mlhs.co.uk

quoting ref: The Cresset

M&L Healthcare Solutions is authorised and regulated by the Financial Conduct Authority. (FCA Reference number 554206)

PREMIER INVESTMENT MANAGEMENT SERVICES LTD

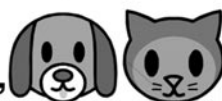
INDEPENDENT INVESTMENT ADVISERS Authorised &
Regulated by the Financial Conducts Authority

Specialist in Isa's & Isa Transfer's
Investment Planning & Portfolio Management

To arrange a free consultation ring **01223-882422** or email
pims@globalnet.co.uk or visit **www.pims-uk.com**



"Nesslands of Burwell"



Your local Dog Kennels, Cattery and Doggy Day Care!
Delivery and Collection Service Available !

Fully Licensed by ECDC and Veterinary Inspected.
Ness Road, Burwell. CB25 0DB www.nesslands.com

Call Tim or Anya on 01638 720623



1st Bottisham Scout Group Hiring Service

Bottisham Scout Headquarters is available for hire for
children's parties, dance lessons, meetings, keep-fit,
jumble sales, drama, music practice sessions etc.

For hall hire contact bottishamhuthire@outlook.com



Sab saint
andrews
bureau

THE PROPERTY SPECIALISTS

FOR ALL YOUR PROPERTY NEEDS

**Lettings - Sales
Estate Management - Insurance**

Your local independent property agency.
A family business operating since 1959.

**CALL OUR OFFICES TO ARRANGE A
FREE VALUTATION**

Kane Astin - kane@sab.co.uk

Cambridge
01223 352170

Swaffham Bulbeck
01223 352170

London
0203 786 3145

Hertford
01992 501752

Royston
01763 242222

Longstanton
01954 781963

sab.co.uk



INDEPENDENT FINANCIAL SOLUTIONS

You know that the State Pension is not enough, but you don't know what it will provide!
You want to save for your retirement, but you don't know what you will need!
You wish to protect your family against financial disaster, but don't know what cover you require!
You need to make your money work hard, but don't know which option is best for you!
You would like to reduce your tax bill, but you don't know how!

Whether you own a company, are self employed, employed or retired, we can help!

We don't believe in adding to your problems.

We believe in clear and simple solutions.

Let us provide you with an **INDEPENDENT**
review of your financial situation.

**The value of investments and income from them may go down.
You may not get back the original amount invested.**

*Tax treatment is based on individual circumstances
and may be subject to change in the future*

**Tel: 01638 615343 or Fax: 01638 615342
E-Mail: qc@independent-financialsolutions.co.uk
Website: www.independent-financialsolutions.co.uk**

Newnham Farmhouse, 16 Low Road, Burwell, Cambs, CB25 0EJ
Partners: Quentin Cooke (authorised Independent Financial Adviser) & Alison Cooke



HAVE YOUR SAY ON
FUTURE BUS SERVICES

Help shape public transport services
in Cambridgeshire & Peterborough

TELL US YOUR VIEWS

Prize draw to win £100 of high street shopping vouchers

Complete the survey by:

 calling:
07377001512

 online:
WWW.SMARTSURVEY.CO.UK/S/FUTUREBUS

Survey Deadline

SUNDAY 15TH DECEMBER



ANDREW HULME

Chartered Accountant



12 Tunbridge Lane
Bottisham

Cambridge
CB25 9DU

Tel. 01223 811323
andrew@hulmeacc.co.uk

- Accounting
- Bookkeeping
- Club Accounts & CASC Assistance
- VAT Returns
- Management Accounting
- Personal Tax
- Business Advice



PET TIME

www.pettime-petcare.co.uk

No pet too small!

Dog walking
Cat, dog and small animal feeding visits
Dog home boarding
House and pet sitting
Doggy daycare

Contact Michele:

07765 791227

01638 508337

info@pettime-petcare.co.uk

All animals from hamsters to horses
cared for just as you would want.
Fully insured, first aid trained
and police-checked.

STEPWISE FOOTCARE

Vivien Honeyborne-Martins

MA(Cantab) BSc(Hons) MChS HPC Registered



Clinic-based Chiropody/Podiatry

- *Chiropody*
- Biomechanical assessment
- **SIDAS** orthotic therapy
- Children's foot problems
- *Foot/knee pain problems*
- **Lunula Laser™** fungal nail treatment
- **Swift Microwave** for verrucas

The Burwellness Centre, Unit 1, 10 Ness Road,
Burwell, Cambridge, CB25 0AA

Tel: 01638 741973

stepwise-footcare.co.uk vrmpost@hotmail.com

Tutor



Experienced tutor:

Fully qualified former primary school
teacher and home educator based in
Little Wilbraham

Expertise in:

Primary

Key Stage 3: Maths, English,

History & Geography

Study skills & revision techniques

For information and to arrange a free
meeting/consultation contact:

Anne-Marie McCubbin BA(Hons) PGCE

email: info@wingstoflyeducation.co.uk

tel: 01223 811939

Thoughts of a Sports Nut

So, the Bottisham boys returned from Bulgaria in mid-October reflecting on something of a footballing odyssey in Prague and Sofia (Euro 2020 qualifying matches). Firstly, we were treated to a dull, soulless exhibition of football from England (lost 2-1) in a beautiful, vibrant city, followed by a beautiful, vibrant performance (won 6-0) in a dull, soulless city!

Readers will know that the second match was marred by the racist behaviour of a number of home spectators, which resulted in the Bulgarian prime minister sacking the head of their FA, former Reading goalkeeper Borislav Mihaylov, and the resignation of the team manager Krasimir Balakov. The perpetrators themselves, members of a well-known group of neo-Nazis in the country, were handed small fines and two-year banning orders – which does the otherwise lovely people of Bulgaria no credit at all; and UEFA ‘slapped the Bulgarian FA’s wrist’ with an order to play two matches behind closed doors. Why, oh why, couldn’t they have no ‘home’ games for the foreseeable future, or suffer disqualification from the next major competition. Only draconian punishments will stamp out this nonsense in the football context but, sadly, I’m afraid there are endemic problems in certain parts of Europe that will take generations to resolve.

However, I find it embarrassing and mildly sickening for us, the English, to claim the moral high ground here. The media, even the official England camp, has praised the 3,500 travelling supporters for their behaviour. BUT, whilst away, we heard plenty of profane chants that were anti-Bulgarian, anti-Scottish, anti-Irish, anti-German, anti-Argentinian even, and subsequently the English FA has been charged with supporters’ disruption of the Bulgarian national anthem... I don’t call that supporting our team, do you?

The other thing we’ve been talking about ad nauseum recently is the Video Assistant Referee. As the controversies multiply, and referees become increasingly paralysed in decision-making, I’ve heard all kinds of suggestions for solutions, from the sublime “scrap the whole thing and leave it to the referee” to the ridiculous “let VAR make all the decisions so the ref can blow his whistle without the responsibility”! In another perfect example of needing to be careful what you wish for, VAR was brought in to eradicate erroneous refereeing decisions and to stop arguments! The trouble is, the definition of “erroneous” is extremely subjective and depends largely on your point of view – both physical and psychological. Do you think we need VAR-VAR... i.e. another VAR to check the decisions of the first VAR? (There was clearly a post-match review of Son Heung-Min’s recent red card against Everton which, itself, was prompted by the video assistant after the ref first brandished a yellow!) But what if the second one is perceived to make a mistake? Perhaps VAR-VAR-VAR would do the trick..?

And it’s not only in football that the video ref is splitting hairs selectively... we saw more than one controversial decision in the recent Rugby Union World Cup due to some incomprehensible decision making by the TMO. I wonder how far the spectating public will allow the examination of minutiae to continue in both sports before they lose patience and start walking away...

(Sports Nut continued on page 49)

Bottisham

Post Office and Village Stores

12 High Street Bottisham Cambridge CB25 9DA

Tel: 01223 811281 PO Tel: 01223 812863

Shop opening: 5.30am - 9.00pm 7 Days

Post Office: 9am - 5.30pm Sat 9.00am - 2.00pm

Your All-in-One Shop

Groceries, chilled & frozen food, delicatessen, confectionery, off-licence, haberdashery, household, healthcare, stationery and greeting cards.

Free local delivery of grocery orders

TV licence, Top-ups, elec/gas keys/tokens, money transfer, phone cards, congestion charges.

Newsagency with home delivery to Bottisham, Lode, Longmeadow, Quy,

Six Mile Bottom and Swaffham Bulbeck. Dry Cleaning & Floral Service

FREE TO USE ATM MACHINE

Vehicle Licences • Personal Banking • Foreign Exchange

Phone Cards & Mobile Top-Ups • On-line Lottery.

Rothwell's Carpet Cleaning

Thorough, professional cleaning of Carpets, Upholstery, Rugs, Tile & Grout and Natural Stone floors.

- 'Truck mount' cleaning system
- Family firm est 1993
- Great customer service
- We move all the furniture
- Fully Insured
- Highly trained & experienced
- **100% satisfaction or its free**

*If you use us,
you'll recommend us!*



NCCA[®]
NATIONAL CARPET CLEANERS ASSOCIATION
CLEANING THE NATION'S CARPETS AND UPHOLSTERY

M2391

For a quote
or advice please
07545 962 026
01223 832 928
www.rothwells.biz

(Sports Nut continued.)

None of which detracts from a magnificent tournament in which the Japanese hosts made many new friends for their joie de vivre and memorable victories in their group games. And no-one can begrudge the South Africans their historic triumph after marmalising England in the final. Disappointing as it was for the English, who were not just out-fought, but out-thought by the Springboks, the performance of the South African pack and defence was absolutely awesome, wasn't it? England can, hopefully, take some satisfaction from their near-perfect demolition of the All Blacks in the semi-final but, sadly, there are no prizes for peaking one match too early!

A final word on the World Cup: am I the only person who finds the whole 'Haka' thing very weird? Firstly, why should opponents have to stand by, watching meekly as the All Blacks pump themselves up with intimidating songs and gestures? And secondly, is it really appropriate for white men of British descent to be chanting Maori slogans when so many Maoris are treated as second class citizens in New Zealand? How about the World Rugby Council allowing England to don their bells and handkerchiefs and perform a Morris-Dance right back at them?!

Which reminds me of an age-old debate that has not, to date, adorned my jottings, but I know that Jolley Old Tony will have some pertinent views on the matter... When are we English going to stop hijacking the United Kingdom's national anthem as 'ours', when the other home countries rouse themselves with their own patriotic acclamations? 'Jerusalem', with its specific English content, would be eminently more suitable in my humble opinion. What would you choose?

I'll sign off 2019 with a few words on two great champions who caught my eye in November for different reasons. Lewis Hamilton got all philosophical after quietly and predictably securing his sixth World F1 Championship. Stating his intention to carry on ignoring the considerable risks of motor racing, Hamilton declared "I really love being in this sport. I'm so grateful to this sport for giving me a life and giving my life purpose." And talking of life, double Olympic Gold Medalist, Nicola Adams, announced her retirement from boxing after delighting sports fans for two decades with her infectious personality and dedication to her craft. The reason was to save her sight after sustaining a torn pupil in her last bout, and it served to remind us of the place of sport in the great scheme of things... it's just 'games' when all is said and done, eh?

May I take this opportunity to thank all Cresset readers for supporting your wonderful village magazine, whether or not you pay any attention to my Nutty diatribes, and to wish everybody a peaceful and happy Christmas season. See you next year. Perhaps the various sporting authorities will have improved vision in the year 20-20...!

TTFN - Gerry Daish



Copy deadline for next issue is 10th December.

Please send material to the editor at BottishamCresset@gmail.com

COMPLETE PLASTERING

TILING • DRYLINING • ALL BUILDING WORK
CARPENTRY • SCREEDING
LIME PLASTERING • PAINTING & DECORATING

Covering all of Cambridgeshire

CONTACT: GLENN WARDER

TEL. 01223 811991
MOB 07734 904050

E-MAIL: COMPLETEPLASTERING@MSN.COM
RELIABLE SERVICE FREE ESTIMATES

Chiropody

In your own home

Save £5

off your first treatment
when you present this advert.

Call **07905 267114** for an appointment

Daniel Harris BSc Hons MChS

Fully qualified and Registered with Health Care Professions Council



DRAIN-PLUMB

*Plumbing, Heating & Drain
Services*

BLOCKED DRAINS CLEARED

- Gas Boiler Service & Maintenance
- Power Flushing of Boilers & Heating Systems
- Home Buyers CCTV Drain & Plumbing Surveys
- All Plumbing & Heating Repairs/Alterations
- All work Guaranteed

TEL: 01638 742873
MOB: 07932 773515

7 NESS ROAD,
BURWELL
CAMBRIDGE, CB25 0AA

BED AND BREAKFAST THE MEADOW HOUSE

2A High Street, Burwell,
Cambridge. CB25 0HB



- En-suite rooms with colour TV.
- Large car park and grounds.
- Family rooms, children welcome.
- English Tourist Board 4 Diamonds.

*Self catering cottage also available
at Swaffham Prior.*

Brian and Hilary Marsh

Tel: 01638 741926

Fax: 01638 741861

Website: www.themeadowhouse.co.uk

SQUEAKY MOUSE

**Local, Professional,
Computer Help
and
Support**

www.squeakymouse.com

01223 852872

support@squeakymouse.com

**POWER CONTROL PANELS
(CAMBRIDGE) Ltd.**

Also trading as
DB Electrical & Building Services

Dale Badcock
07718 122538

dale.pcp@gmail.com



All domestic work undertaken

- Rewiring
- Lighting
- Burglar alarms
- Security lighting
- Lighting design
- Controls Specialist
- Renovations
- Alterations
- Kitchens & Bathrooms

Unit 2 Barnwell Business Park
Cambridge CB5 8UX
01223 212054
powercontrolpanels@gmail.com



Rebecca Golding
now has her new salon
in Burwell

Tues
9.30am-8pm
Thurs
9.30am-8pm



30 Years'
Experience
All aspects of
Hairdressing

Tel. 07742 997474

Free Parking at
67 Silver Street
Burwell, CB25 0EF



**TIM PHILLIPS
& Co.
Accountants**

Independent, specialist service for:
**Small Business • Self Assessment
Personal Taxation**

Free initial consultation – no obligation
EASY, FREE PARKING

Copley Hill Business Park, Cambridge Rd., Babraham
Off A1307 between Wandlebury and Babraham

Tel: 01223 830044. www.tpaccounts.co.uk

FATHER CHRISTMAS OR SANTA CLAUS?

Is it a generational thing I wonder? I was brought up to call this mystical figure ‘Father Christmas’, as were our children. But I’ve become aware of late that our grandchildren are increasingly referring to him as Santa Claus. And when you look around the shops already promoting Christmas and view the display of Christmas Cards on offer, Father Christmas hardly gets a mention.

However the National Trust has insisted that "Father Christmas" is used in its hundreds of stately homes and historic buildings because the name is more British. The Trust stepped in to settle a dispute in families about what name to give St Nicholas, who for many is the personification of Christmas. "Santa Claus", which originates from Dutch settlers in the US, has increasingly usurped the more traditional British "Father Christmas" at this time of the year. Etiquette experts though back the Trust’s stand against Santa Claus, describing it as an Americanism and that British ‘people’ of a certain class tend to prefer the less commercialised “Father Christmas”.

But regardless of your preference or social standing the mythical figure is widely known for spreading Christmas cheer. As we all know – or do we – the first recorded date of Christmas being celebrated on December 25th was in 336, during the time of the Roman Emperor Constantine (he was the first Christian Roman Emperor). Christmas is a (Victorian) derivative of Christ’s Mass which is a religious festival celebrating the birth of Jesus and the term Christmas (“mass on Christ’s day”) is of fairly recent origin.

Father Christmas and Santa Claus could be considered distant cousins as they both find their roots drawn from the real-life Saint Nicholas of Myra, who lived during the 4th century. Father Christmas first appeared during the ancient British mid-winter festivals but at the time he was not called Father Christmas. He was known as a pagan figure that was the bringer of spring. Then while under Saxon rule, this pagan figure morphed into King Frost - well known for visiting people’s homes during the holidays and if people were nice to him, it was believed that he would give them a present in return.

The Father Christmas we know today, as depicted in the 17th century, sported a beard, but it wasn’t white, and his clothing colour was green, not red. And we can thank Scandinavian myths for his reindeer pulled sled. His elves have a Germanic and distinctly devilish background but the mince pies, milk and sherry we leave out for Father Christmas have an even more ancient origin. Such offerings are reminiscent of sacrifices to pagan gods that long pre-date Christianity and there are some disturbing variations which I will not venture into.

Americans believe that Santa Claus is based in the North Pole which considering it consists of constantly shifting frozen ice, is just a bit unlikely. The British and European traditions are more prosaic, and believe Father Christmas’ workshop or grotto is in Finland,

ARCHITECTURAL DRAWINGS

FOR

PLANNING & BUILDING REGULATION APPLICATIONS

NEW PROPERTIES, EXTENSIONS, LOFT CONVERSIONS ETC

CONTACT US now to arrange a FREE on-site meeting at your convenience to discuss your project.

ELY DESIGN GROUP

'Architecture by Professionals'

www.elydesigngroup.co.uk

01353 649649

mail@elydesigngroup.co.uk

Lloyds Gardens

Friendly Affordable Reliable Gardening Service

- All aspects of tree surgery
- Stump grinding
- Root ball removal
- Tree houses
- Garden Structures
- Bespoke clay pizza ovens

FULLY ACCREDITED AND INSURED

ALL WORK CARRIED OUT TO BS 3998 STANDARD

MANY HAPPY REFERENCES AVAILABLE ON REQUEST

Tel: 01638 744140

Mob: 07811 132709

WWW.LLOYDSGARDENS.ME.UK



in an area called Lapland. But if our Father Christmas really wanted to be accurate and come the night before the birth of Christ, he'd be popping down our chimneys sometime in September. So why does he come on the 24 December? Well, the reason we celebrate Christmas Day on 25 December is because Pope Julius I in the fourth century AD said so. He wanted to popularise Christianity and so appropriated existing pagan practises. This is perhaps why early representations of Father Christmas saw him dressed in green, representing the green shoots of spring in the depths of winter.

And so Britain was introduced to Saint Nicholas and, combined with Christmas traditions of the past, Father Christmas or Father Noel was born. But this version of Father Christmas was not associated with distributing gifts to children, but instead was believed to deliver the Christmas Spirit and encouraged those around him to eat, drink and be merry during the Christmas season. Nevertheless the Father Christmas we all know and love today is well known for traveling around in his sleigh powered by 8 reindeer while carrying gifts for all the good little 'girls and boys' around the world, and long may it be so...

"Have a very merry and happy Christmas wherever you may be and whoever you are with and may your 'Father Christmas' be kind and generous in whatever he bestows upon you..."

JOW



LET'S DANCE

Come and join us dancing on Saturday evenings in the New Main Hall at Bottisham Village College. We will have music for Ballroom, Latin American and popular Sequence dancing.

Dates:

December 14th (Black Tie optional)

Time: 7.30pm to 10.30pm.

The cost is £12 per couple. You are welcome to bring along your own refreshments. There is ample parking on site. For further information please contact: Frank and Sue Hancocks, 01638 741159 or check out our new website: www.letsdancecambridge.org

**Let's Dance Cambridge is a "not for profit" organisation established to provide dances for the community.*



J&J DRAKE



Fully approved electrical contractor

- All Work Certificated in Accordance with NICEIC
- Free no obligation quotations
- All aspects of electrical work undertaken such as re-wires, Periodic test and inspections, maintenance calls, New build Installations.
- However small you may consider your job it will be treated with the same attention to detail as every one of our jobs.

Your Local Electrician

Unit 24, Hall Barn Road Industrial Estate, Isleham, Ely, Cambs. CB7 5RJ

Contact us on: 01638 781567 / enquiries@jandjdrake.co.uk



Specialists in Military Fine Art & Framing

- Gallery open by prior arrangement
- All types of framing undertaken to match your budget
- Latest prints & rare secondary market art
- Military art collections purchased
- Find us on Facebook

Gallery & Framing Services at 83 Longmeadow, Lode

www.merlinaviationart.com

Email: hello@merlinaviationart.com

Tel: 01223 751545



BARCHESTER

Celebrating life



Celebrating Life

Our homes are more than care homes. They're family homes.
Friendly homes. Homes that provide tailored care, beautiful
environments and choice in every meal or activity.

Places that celebrate the little things that
mean everything – morning, noon and night.

Visit us anytime for friendly advice and to look around.
You can also find helpful information at www.barchester.com

Hilton Park Care Home
Bottisham, Cambridge, CB25 9BX
Tel: 01223 663 029

Oaklands Care Home
Bottisham, Cambridge, CB25 9BX
Tel: 01223 663 015

Nursing care • Dementia care • Respite care & short breaks
En-suite rooms • Landscaped gardens • Salon • Wi-fi

REFLEXOLOGY

For Health and Vitality

Reflexology has been
an effective treatment for:

- Migraine • Back Pain • Infertility • Arthritis
- Sleep Disorders • Hormonal Disorders (Including PMT) • Sports Injuries • Digestive Disorders • Relaxation • Stress Related Conditions (exams, work, home, life) • Little people in nappies! (BabyFlex) • Men and Women, young and old.

Jennie A Fatibene MAR MBFVEA

Tel: 01223 811045

**** Gift vouchers available ****

BURWELL COMPUTERS

We provide a full range of
computer repairs and information
technology support services to
businesses and home users.

- VIRUS & SECURITY • EMAIL & INTERNET
- BROADBAND • WIRELESS • ROUTERS
- NETWORKS • SERVERS • UPGRADES
- REPAIRS • NETWORK CABLING

Tel/Fax: **01638 742702**

Mobile: **07901 556895**

support@burwellcomputers.co.uk
www.burwellcomputers.co.uk

At Wired we don't have problems - only solutions



We offer solutions for all your Aerial, Freesat, CCTV, Telephone
and Data Cabling needs.

No job is too big or too small for our engineers.

With no call centres, you will be able to speak directly to the engineer.

We offer an efficient, cost effective and friendly service.

Contact us now for a no obligation quote.

Contact us NOW for a free no obligation quote

01638 281234 / 07761 572186

www.allwired.co.uk

info@allwired.co.uk





My Village Handyman *Services*

- DIY repairs and odd jobs
- Painting & Decorating
- Tiling, Flooring & Patios
- Gardening, Landscaping, Fencing & Decking
- Kitchen & Bathroom installation
- Brickwork, Dry Walling and Small Builds
- Carpentry and Plumbing
- Window and Gutter cleaning
- Jet wash and Patio cleaning
- Rubbish clearance and Tip runs
- Carpet cleaning and Wood Floor staining
- New doors or locks
- TV and Audio Installations
- Security and Garden lighting
- **No job is too Small or too Big!**

Free no obligation quotes and advice provided
Your very local Handyman from Great Wilbraham



Contact us to arrange a visit or quote
07484 637084 or **01223 881700**

Email: info@myvillagehandyman.com | www.myvillagehandyman.com

HARRISONS OF BURWELL LTD

Plumbing and Heating

FREE ESTIMATES GIVEN

Gas Boiler Servicing

Clarence House, 7 Ness Road, Burwell, Cambs CB25 0AA
Telephone: Newmarket 01638 742873 - Mobile 07932 773515
email: harrisonsofburwell@gmail.com

Gas Safe Registered

HAYDEN

THE CLEANING SPECIALIST

Merrywood
8 Lode Rd. Bottisham CB25 9DJ
01223 813766 or 07919561665
Email: hayden.woodruff@btinternet.com

WOULD YOU LIKE YOUR CARPETS
OR UPHOLSTERY CLEANED?

HAYDEN IS LOCAL TO THE AREA,
OFFERING FREE QUOTATIONS
AND ADVICE

WE ALSO CLEAN WINDOWS WITH
OUR NEW REACH AND WASH
SYSTEM OR TRADITIONAL, YOUR
CHOICE

k-domestic electrical solutions



Complete installations & rewires

Small and large alterations

Lighting

Internal & External work

PAT testing

Periodic Inspection & Reports

Full Inspection, Testing,
Verification & Certificate issue

LED

Under Floor Heating

Voltage Optimization

your **local** electrical service of choice and recommendation

Karl Howe

01638 610438 M: 07541 008613

Email: enquire@k-elecsolutions.com Website: www.k-elecsolutions.com

Fully qualified Part P and 17th Edition

**City &
Guilds**
Qualified



NEED A NEW FENCE ?

- Reliable local company. Established 2007.
- Over 1000 local installations.
- Choice of colours & sizes.
- NEVER PAINT A FENCE AGAIN.
- Will withstand storm force winds.
- 25 years guaranteed product.
- Numerous local testimonials available.



For a **free, no obligation**, site survey and quote.

Call us now on 01223 811160

www.colourfencecambs.co.uk

Bottisham Vehicle Services Ltd.

Reliable, Friendly, Professional

Service and repairs to all makes,
MOT testing, tyres, air conditioning
Courtesy car available
Local collection and delivery

10 Tunbridge Lane, Bottisham, Cambridge CB25 9DU
01223 811919 • simon@bvsltd.net • www.bvsltd.net

'Your Friendly, Local Wood Burning Stove Specialist'



VISIT OUR SHOWROOM!

The Stone Yard,
Whitelands Farm,
Newmarket Road,
Bottisham,
Cambridge.
CB25 9BD

Opening hours have changed

Monday - Closed

Tuesday-Thursday

10.00-2.00pm

Friday - Closed

Saturday - 12.30-3.00pm*

- Sunday closed

**Seasonal opening,
please check website*



01223 703184

Email: sarah@cambridgestoves.co.uk

www.cambridgestoves.co.uk

**CALL NOW FOR YOUR FREE, NO
OBLIGATION SURVEY AND
QUOTATION, OR CALL IN AT OUR
SHOWROOM**

**ALL ASPECTS OF BUILDING WORKS TO
YOUR FIREPLACE UNDERTAKEN**

**FAST, RELIABLE AND EFFICIENT
SERVICE CARRIED OUT BY QUALIFIED
HETAS ENGINEERS**

**LARGE SELECTION OF WOOD
BURNING STOVES AND FIRESIDE
ACCESSORIES ON DISPLAY**



**MOVING TO NEW
PREMISES MID
SEPTEMBER**

**PLEASE CHECK WEBSITE FOR
DETAILS**

MOBILITY EQUIPMENT

STAIRLIFTS, SCOOTERS, WHEELCHAIRS, RISING CHAIRS AND
BEDS, WALKERS, TOILET & BATHING AIDS, KITCHEN &
HOUSEHOLD AIDS, CONTINENCE CARE, FOOTWEAR

SPARES, SERVICE, HIRE OF EQUIPMENT
HOME VISITS AVAILABLE
FRIENDLY AND CONSIDERATE SERVICE GUARANTEED



SCOTSDALES GARDEN CENTRE
HORNINGSEA
CB25 9JG
01223 863908
www.orchard-mobility.co.uk

Monday to Saturday 9.00 – 5.00

Bottisham Parish Council

CHAIR

JON OGBORN

VICE CHAIR

WILLIAM CLARKE

PARISH COUNCILLOR

CHRISTINE BRYANT

HILDA BUCHANAN

LEE CHETWYND

LINO DI LORENZO

VICTORIA MARSH

PETER MARTIN

STEVEN O'DELL

BILL SUNNER

LAURIE VAN SOMEREN

DISTRICT COUNCILLO

CHARLOTTE CAINE

JOHN TRAPP

COUNTY COUNCILLOF

MATHEW SHUTER

PARISH CLERK

CLAIRE FULLWOOD

BOTTISHAM COMMUNITY LIBRARY ASSOCIATION

LIBRARY OPENING HOURS

Monday	Closed
Tuesday	3-5pm and 6-8pm
Wednesday	10-11.30am
Thursday	3-5pm
Friday	6-8pm
Saturday	10am-12noon

*Working in Partnership with the
County Library Service.*

Useful Information

Bottisham Website:	WWW.BOTTISHAMPC.CO.UK
Holy Trinity Church: Revd Sue Giles	812726
Roman Catholic Priest: Monsignor Eugène Harkness. Parish of St Philip Howard	01223 211235
RE:NEW/Lode Chapel: Rev. Alan Brand	01223 812558
Bottisham Surgery:	
Enquiries and Appointments	810030
Out of Hours only - Urgentcare Cambridge	111
Bottisham Library:	812354
Library hours: Monday Closed; Tuesday 3-5pm and 6-8pm; Wednesday 10-11.30am	
Thursday 3-5pm; Friday 6-8pm; Saturday 10am-12noon	
Cambridgeshire Police HQ:	01480 456111
Cambridgeshire Police: (NON-URGENT MATTERS) ring 101 - In EMERGENCIES ring 999	
Police community support officer Ann Austin PCSO 7353 at Ely Police Station ...Contact through 101	
1st Bottisham Rainbows/1st Bottisham Brownies: Kay Pearce	811055
Bottisham & District Gardening Club: Secretary: Julia Green	811467
Bottisham Bowling Club: Keith Gibson, Secretary	811049
Bottisham Carpet Bowls Club: Nora Watson	812121
Bottisham Community Primary School:	811235
Bottisham Cricket Club: Martin Wilson	07768 031979
Chairman: Will Allen	07801 580604
Bottisham Local Charities Trustees: Clerk - Coral Hatley	811457
Bottisham Pharmacy:	812321
Bottisham Pool Association: Manager - Jason Rye	811121
Bottisham Royal British Legion Branch: Secretary. Peter Walker	811402
Branch Chairman: Dave Frost	www.Britishlegion.org.uk/branches/bottisham
Bottisham Scout Group: Group Contact: Linda Jones	813040
Bottisham Community Sports and Social Club: Secretary Graham Darling,	
Bottishamcsasc@gmail.com	812063
Bottisham Village College, School:	811250
Evening Classes, Clubs and Youth Club Information	811372
Bottisham W.I.: Secretary - Jenn White • mrandjw@btinternet.com	811600
Bottisham Youth Football Club: Jim Tideswell	812591
Cambridgeshire County Councillor: Mathew Shuter	01638 508729
East Cambridgeshire District Offices:	01353 665555
East Cambridgeshire District Councillors: Charlotte Cane 34 Swaffham Road, Reach	07976 607512
John Trapp 104 Commercial End, Swaffham Bulbeck	01223 812120
Girlguiding Bottisham District: Cambs East County office • www.cambseastguides.org.uk	01223 813917
Parish Council Chairman: Jon Ogborn	07486 372780
Parish Council Clerk: Claire Fullwood	07914 219732
Queen's Court Day Centre:	811905
MP for Cambs South East Constituency:	
Lucy Frazer, House of Commons, London SW1A 0AA	
E. lucy.frazer.mp@parliament.uk W. www.lucyfrazer.org.uk	
Cambridgeshire Trading Standards Helpdesk:	0845 3030666
Saplings Preschool:	813226
Milton Road Tip: Apr to Sept - Weekdays 9.00am-8.00pm: Weekends 9.00am-6.00pm	860674
Oct to Mar - 9.00am-4.00pm	
CRESSSET Editor:	email: BottishamCresset@gmail.com
Treasurer, Advertising rates and payment: Rhona Walker, 94 High Street, Bottisham	811402
Distribution: Ian & Helen Cole	812573
Design/Artwork: ONG (Old Newton Graphics) • www.codge.com	01449 675548

The Cresset: While every effort is made to ensure accuracy we cannot accept liability for any mistakes or misprints. The views of, or any opinions expressed, are **not** those of the EDITOR. The Editor cannot accept any responsibility for statements made in advertisements.

MANCHETTS

Car Truck & Van Centre



Van Hire from £49

01638 661113

www.manchetts.co.uk

1 Victoria Way Studlands Industrial Estate Newmarket Suffolk CB8 7SH

E.C. AUTOCARE

(Est. 1980)



SERVICING & REPAIRS
Cars & Light Commercial
Diesel & Petrol



MOT TESTING STATION

**Servicing to all makes of Cars
& Light Commercial**

-  **ENGINE MANAGEMENT DIAGNOSTICS**
-  **TYRE - BRAKES - EXHAUSTS**
-  **AIR CONDITIONING SERVICING**
-  **GEARBOX SPECIALISTS** MANUAL & AUTOMATIC

FAST, FRIENDLY, FAMILY BUSINESS

56 HIGH STREET, BOTTISHAM

Also at

A1303 SERVICE STATION, BOTTISHAM
(behind Brian McKay)

Tel.01223 811122 or 01223 812357

